

# Configuring Class of Restrictions (COR)

Document ID: 42720

## Contents

### Introduction

#### Prerequisites

- Requirements

- Components Used

- Conventions

#### Configure COR Example

#### COR vs Cisco CallManager

#### Verify

#### Troubleshoot

#### Related Information

## Introduction

Class of Restrictions (COR) is a Cisco voice gateway feature that enables Class of Service (COS) or calling privileges to be assigned. It is most commonly used with Cisco Survivable Remote Site Telephony (SRST) and Cisco CallManager Express but can be applied to any dial peer.

The COR feature provides the ability to deny certain call attempts based on the incoming and outgoing CORs provisioned on the dial-peers. COR is required only when you want to restrict the ability of some phones to make certain types of calls but allow other phones to place those calls.

COR is used to specify which incoming dial-peer can use which outgoing dial-peer to make a call. Each dial-peer can be provisioned with an incoming and an outgoing COR list. The **corlist** command sets the dial-peer COR parameter for dial-peers and the directory numbers that are created for Cisco IP phones associated with the Cisco CallManager Express router. COR functionality provides the ability to deny certain call attempts on the basis of the incoming and outgoing CORs that are provisioned on the dial-peers. This functionality provides flexibility in network design, allows users to block calls (for example, calls to 900 numbers), and applies different restrictions to call attempts from different originators.

If the COR applied on an *incoming* dial-peer (for incoming calls) is a super set or equal to the COR applied to the *outgoing* dial-peer (for outgoing calls), the call goes through. *Incoming* and *outgoing* are terms used with respect to the "voice ports". **COR is often described as a lock and key mechanism. Locks are assigned to dial peers with an outgoing COR list. Keys are assigned to dial peers with an incoming COR list.**

For example, if you hook up a phone to one of the Foreign Exchange Station (FXS) ports of the router and try to make a call from that phone, it is an incoming call for the router/voice-port. Similarly, if you make a call to that FXS phone, then it is an outgoing call.

By default, an incoming call leg has the highest COR priority and the outgoing COR list has the lowest COR priority. This means that if there is no COR configuration for incoming calls on a dial-peer, then you can make a call from this dial-peer (a phone attached to this dial-peer) going out of any other dial-peer, irrespective of the COR configuration on that dial-peer.

This document provides examples of how to configure COR.

# Prerequisites

## Requirements

Before you attempt this configuration, ensure that you are familiar with how to configure a Cisco IOS Telephony Service on a router. Cisco IOS Telephony Service version 3.0 is referred to as CallManager Express 3.0.

## Components Used

The information in this document is based on these software and hardware versions:

- Cisco IOS® Software Release 12.2(8)T or later with a minimum of IP Plus (IP/VOX Plus on the Cisco 1700 series) feature set. This document assumes Cisco IOS Telephone Services (ITS) 2.0 support in Cisco IOS Software Release 12.2(8)T or later. Refer to Cisco IOS Telephony Services Version 2.1 for more information on ITS and Cisco IOS Software releases.
- Cisco 3725 Gateway with Cisco IOS Software Release 12.3(4)T with the IP Plus feature set is used in the configuration example, although most IAD 2400s, 1700, 2600, 2800, 3600, 3700, 3800 series routers are currently applicable. Cisco CallManager Express 3.0 is supported in Cisco IOS Software Release 12.4(10). Check the Cisco IOS release notes for current version and software support information.

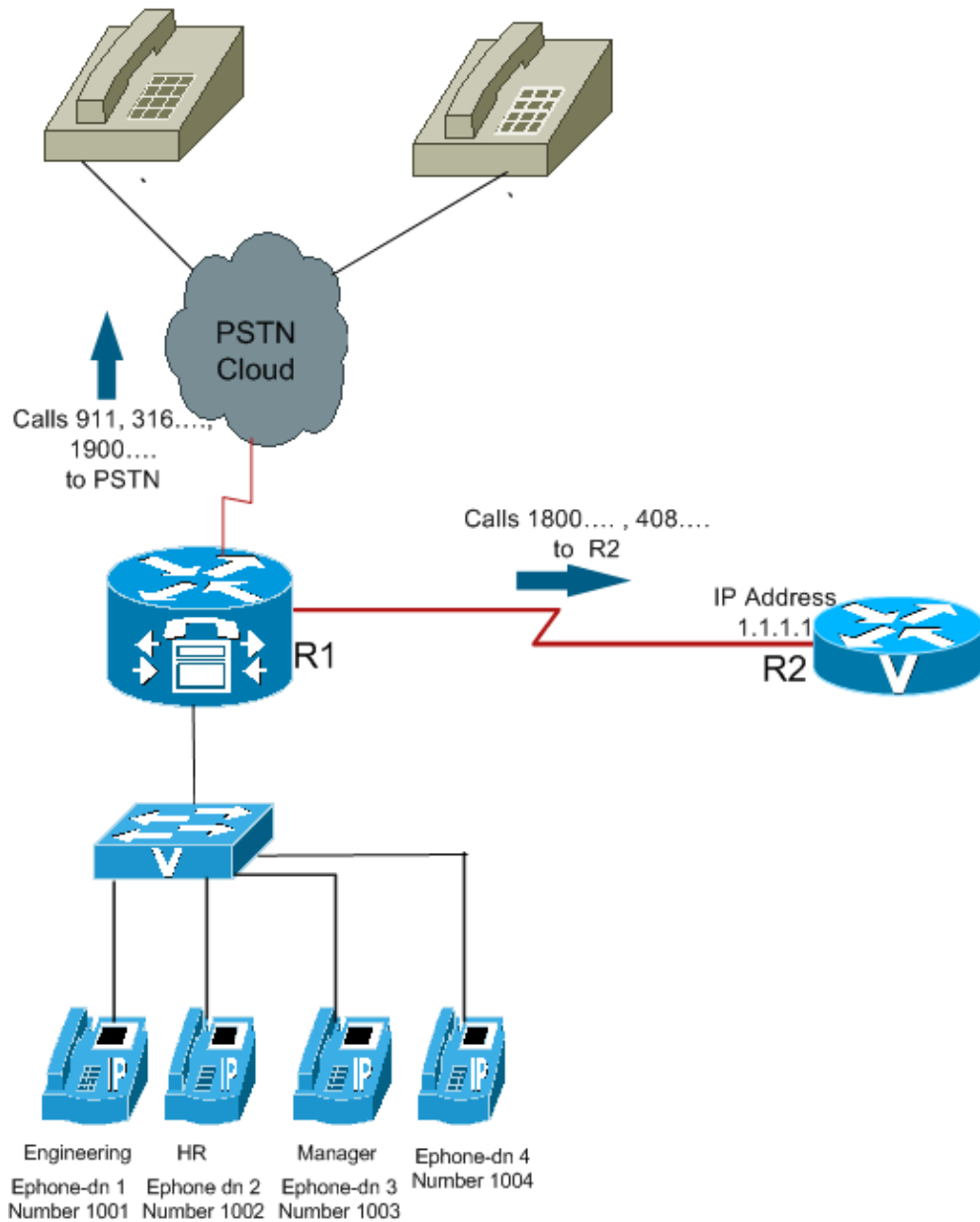
The information in this document was created from the devices in a specific lab environment. All of the devices used in this document started with a cleared (default) configuration. If your network is live, make sure that you understand the potential impact of any command.

## Conventions

Refer to Cisco Technical Tips Conventions for more information on document conventions.

## Configure COR Example

Figure 1 illustrates the concept of COR lists.



Use this procedure as an example for how to configure COR:

ephone-dn	COR list incoming	Calling Patterns
1001	Engineering	911, 408.... (local_call) and 316&.numbers
1002	HR	911, 1800.... , 408.... (local_call) and 316&. numbers
1003	Manager	911, 1800.... , 1900...., 408....(local_call) and 316&. numbers
1004	none	can call all the numbers possible from the router R1.

1. Configure **dial-peer cor custom** and assign a meaningful name that specifies the way CORs apply to dial-peers. For example:

```
Dial-peer cor custom

name 911

name 1800

name 1900

name local_call
```

2. Create the actual lists of the restrictions that apply to the dial-peer.

```
Dial-peer cor list call911

Member 911

Dial-peer cor list call1800

Member 1800

Dial-peer cor list call1900

Member 1900

Dial-peer cor list calllocal

Member local_call

Dial-peer cor list Engineering

Member 911

Member local_call

Dial-peer cor list Manager

Member 911

Member 1800

Member 1900

Member local_call

Dial-peer cor list HR

Member 911

Member 1800

Member local_call
```

3. Create dial-peers and specify the COR list to be used.

In this example, five dial-peers are created for the destination numbers 408&., 1800&, 1900&, 911, and 316&. The appropriate corlist is applied to each of the dial-peers.

```
Dial-peer voice 1 voip

Destination-pattern 408&.

Session target ipv4:1.1.1.1

Corlist outgoing calllocal

Dial-peer voice 2 voip
```

```
Destination-pattern 1800&
Session target ipv4:1.1.1.1

Corlist outgoing call1800

Dial-peer voice 3 pots
Destination-pattern 1900&
Port 1/0/0

Corlist outgoing call1900

Dial-peer voice 4 pots
Destination-pattern 911
Port 1/0/1

Corlist outgoing call911

Dial-peer voice 5 pots
Destination-pattern 316&.
Port 1/1/0
```

**Note:** There is no COR applied on the dial-peer 5 POTS.

**Note:** If either the incoming dial peer or the outgoing dial peer does not have a COR list applied, the call succeeds.

Use the **telephony-service** command in global configuration mode to enter telephony-service configuration mode to configure a Cisco CallManager Express system. By default, no Cisco CallManager Express or ITS configuration is present.

4. Apply the COR list to the individual phones/Ephone-dns.

```
Ephone-dn 1
Number 1001

Cor incoming Engineering

Ephone-dn 2
Number 1002

Cor incoming HR

Ephone-dn 3
Number 1003

Cor incoming Manager

Ephone-dn 4
Number 1004
```

**Note:** On the Ephone-dn 4 there is no COR applied.

With this configuration:

- Ephone-dn 1 (1001) can call 408&., 911, and 316&. numbers.
- Ephone-dn 2 (1002) can call 408&., 1800... , 911, and 316&. numbers.
- Ephone-dn 3 (1003) can call all the numbers possible from that router.
- Ephone-dn 4 (1004) can call all the numbers possible from that router.

**Note:** All Ephone-dns can call 316&. numbers.

Various combinations of COR lists and the results are shown in this table:

<b>COR List on Incoming dial-peer</b>	<b>COR List on Outgoing Dial-Peer</b>	<b>Result</b>	<b>Reason</b>
No COR.	<b>Outgoing Dial-Peer</b>	Call succeeds.	COR is not in the picture.
No COR.	COR list applied for outgoing calls.	Call succeeds.	The incoming dial-peer, by default, has the highest COR priority when no COR is applied. Therefore, if you apply no COR for an incoming call leg to a dial-peer, then this dial-peer can make calls out of any other dial-peer, irrespective of the COR configuration on the outgoing dial-peer.
The COR list applied for incoming calls.	No COR.	Call succeeds.	The outgoing dial-peer, by default, has the lowest priority. Since there are some COR configurations for incoming calls on the incoming/originating dial-peer, it is a super set of the outgoing call COR configurations on the outgoing/terminating dial-peer.
The COR list applied for <b>incoming calls</b> (super set of COR lists applied for <b>outgoing calls</b> on the	The COR list applied for outgoing calls (subset of COR lists applied for incoming calls on the incoming dial-peer.)	Call succeeds.	The COR list for incoming calls on the incoming dial-peer is a super set of COR lists for outgoing calls on the outgoing dial-peer

outgoing dial-peer).			
The COR list applied for <b>incoming calls</b> (subset of COR lists applied for <b>outgoing calls</b> on the outgoing dial-peer).	The COR list applied for outgoing calls (super set of COR lists applied for	Call <i>cannot</i> be completed	COR lists for incoming calls on the incoming dial-peer are <i>not</i> a

## COR vs Cisco CallManager

- The COR feature in the Cisco IOS Software feature is like a Cisco CallManager calling search space and partitions.
- Cisco IOS Software bases its restriction via dial-peer matching. The Cisco CallManager does it based on digit analysis.
- The **dial-peer cor custom** command is equivalent to creating Cisco CallManager partitions.
- The **dial-peer cor list** command is equivalent to creating a Cisco CallManager calling search space with partitions in it.

Partitions and calling search spaces provide the capability for implementing calling restrictions and creating closed dial groups on the same Cisco CallManager. There are resemblances between the COR operation and the Cisco CallManager calling search spaces and partitions feature. The one thing that COR cannot do is separate line and device calling search spaces and partitions like Cisco CallManager can.

## Verify

After you enter the configurations shown in this document into your router, it is important that you verify the network is operating correctly. These commands and respective output show you a successful implementation of the configurations in this document.

Certain **show** commands are supported by the Output Interpreter Tool (registered customers only) , which allows you to view an analysis of **show** command output.

- **show ephone-dn summary** Displays brief information about Cisco IP phone extensions (Ephone-dns),
- **show telephony-service ephone-dn** Displays information about extensions (Ephone-dns) in a Cisco CallManager Express system.
- **show telephony-service dial-peer** Displays dial-peer information for extensions in a Cisco CallManager Express system
- **show telephony-service all** Displays detailed configuration for phones, voice ports, and dial-peers in a Cisco CallManager Express system.
- **show dial-peer cor** Displays the list of corlist and the members in each list.

This is sample output of some of the commands with respect to the configuration in this document:

```
Router3725#show ephone-dn summary
PORT      DN STATE      MWI_STATE  CODEC      VAD VTSP STATE      VPM STATE
=====  =====  =====  =====  ==  =====  =====
```

50/0/1	CH1 IDLE	NONE	-	-	-	EFXS_ONHOOK
50/0/2	CH1 IDLE	NONE	-	-	-	EFXS_ONHOOK
50/0/3	CH1 IDLE	NONE	-	-	-	EFXS_ONHOOK
50/0/4	CH1 IDLE	NONE	-	-	-	EFXS_ONHOOK

Router3725#**show telephony-service dial-peer**

```
dial-peer voice 20001 pots
destination-pattern 1001
calling-number local
huntstop
corlist incoming Engineering
progress_ind setup enable 3
port 50/0/1
```

```
dial-peer voice 20002 pots
destination-pattern 1002
calling-number local
huntstop
corlist incoming HR
progress_ind setup enable 3
port 50/0/2
```

```
dial-peer voice 20003 pots
destination-pattern 1003
calling-number local
huntstop
corlist incoming Manager
progress_ind setup enable 3
port 50/0/3
```

```
dial-peer voice 20004 pots
destination-pattern 1004
calling-number local
huntstop
progress_ind setup enable 3
port 50/0/4
```

Router3725#**show dial-peer cor**

```
Class of Restriction
name: 911
name: 1800
name: 1900
name: local_call
```

```
COR list <call911>
member: 911
```

```
COR list <call1800>
member: 1800
```

```
COR list <call1900>
member: 1900
```

```
COR list <calllocal>
member: local_call
```

```
COR list <Engineering>
member: 911
member: local_call
```

```
COR list <Manager>
member: 911
member: 1800
```



```
member: 1900
member: local_call

COR list <HR>
member: 911
member: 1800
member: local_call
```

## Troubleshoot

This section provides information you can use to troubleshoot your configuration.


Place a few test calls over the gateways through the IP WAN or the PSTN to verify that your configuration is correct. You can see if the call that comes into the gateway is ringing when you run a debug on the target gateway.

Refer to the instructions in [Cisco IOS Telephony Service \(ITS\) Configuration and Troubleshooting](#) for additional information on troubleshooting.

- **debug voip ccapi inout** Used to debug end-to-end VoIP calls.
- **debug ephone detail** Used to set detail debugging for the Cisco IP phone.

**Note:** Refer to [Important Information on Debug Commands](#) before you issue **debug** commands.

## Related Information

- [Cisco Unified Communications Manager Express System Administrator Guide](#)
- [Understanding Dial Peers and Call Legs](#)
- [Understanding Inbound and Outbound Dial Peers Matching](#)
- [Configuring Dial Plans, Dial Peers, and Digit Manipulation](#)
- [Troubleshooting and Debugging VoIP Call Basics](#)
- [Voice Technology Support](#)
- [Voice and Unified Communications Product Support](#)
- [Troubleshooting Cisco IP Telephony](#) 
- [Cisco Unified Communications Manager Express Command Reference](#)
- [Technical Support & Documentation – Cisco Systems](#)

---

[Contacts & Feedback](#) | [Help](#) | [Site Map](#)

© 2013 – 2014 Cisco Systems, Inc. All rights reserved. [Terms & Conditions](#) | [Privacy Statement](#) | [Cookie Policy](#) | [Trademarks of Cisco Systems, Inc.](#)

---

Updated: Oct 31, 2007

Document ID: 42720

---