

Setup Wizard on RV215W

Objective

The Setup Wizard allows a network administrator to configure the basic settings for the RV215W quickly and conveniently. This article explains how to configure the Setup Wizard for the RV215W.

Applicable Devices

- RV215W

Software Version

- 1.1.0.5

Advanced VPN Setup

Configure WAN with DHCP

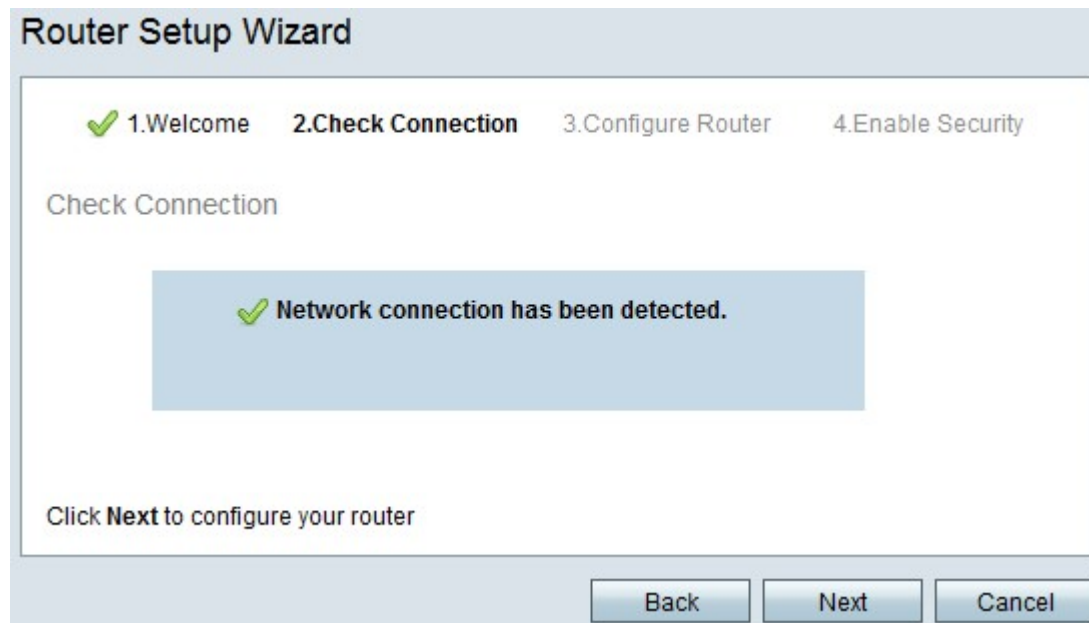
Dynamic Host Configuration Protocol (DHCP) allows you to connect your router to the Internet automatically. The Internet Service Provider (ISP) uses DHCP to configure the settings for the router for you. Perform this procedure if your ISP uses DHCP for Internet connectivity.

Step 1. Log in to the web configuration utility and choose **Administration > Setup Wizard**. The *Setup Wizard* page opens:

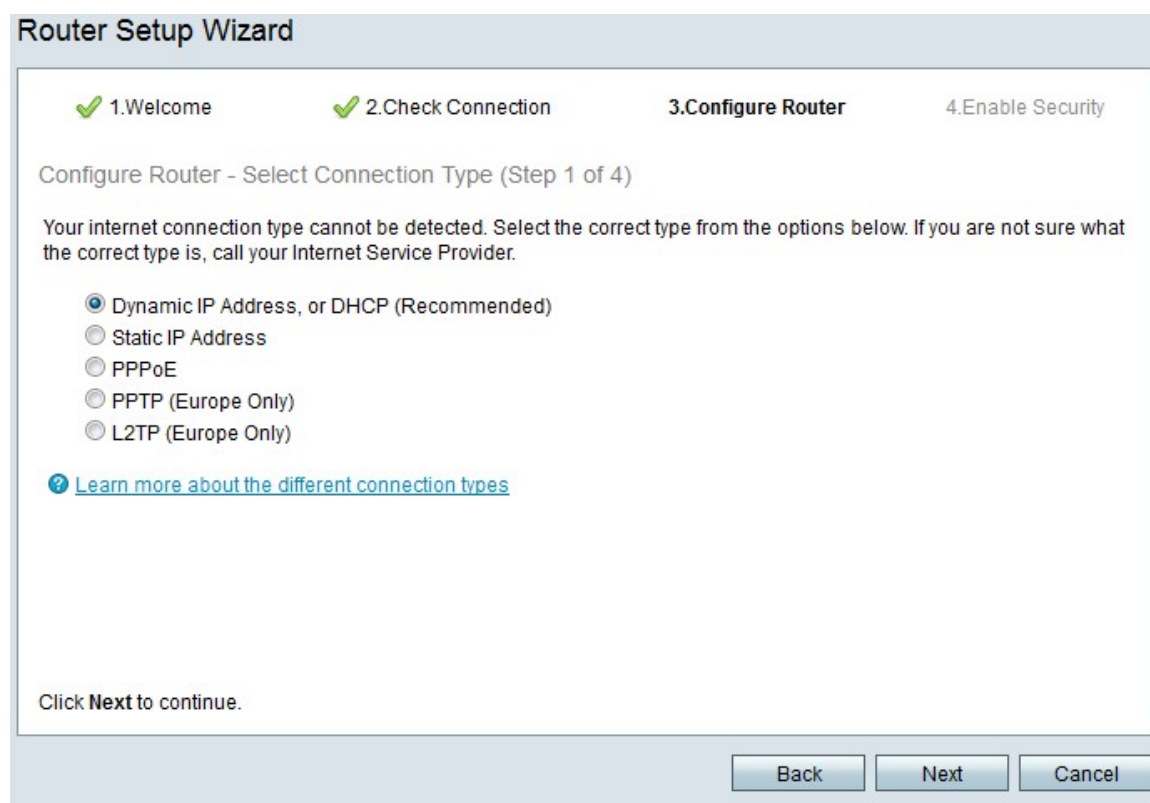


Step 2. Check the **Don't show on start up** check box to prevent the display of the Setup Wizard after login.

Step 3. Click **Next**.



Step 4. The RV215W checks for an Internet connection. After it finishes, click **Next**.



Step 5. Click the **Dynamic IP Address, or DHCP (Recommended)** radio button

Step 6. Click **Next**.

Configure WAN with Static IP Address

A static IP address is an address that does not change. These generally have to be purchased from an ISP. Perform this procedure if your ISP uses static IP addresses for

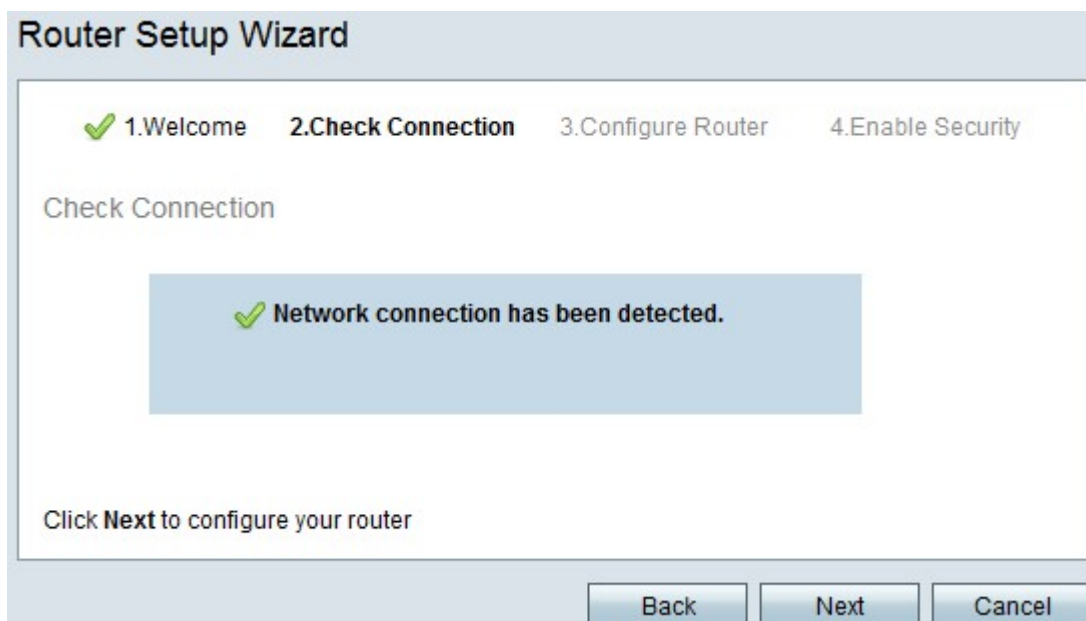
Internet connectivity. This procedure explains how to configure a static IP WAN connection with the Setup Wizard.

Step 1. Log in to the web configuration utility and choose **Administration > Setup Wizard**. The *Setup Wizard* page opens:



Step 2. Check the **Don't show on start up** check box to prevent the display of the Setup Wizard after login.

Step 3. Click **Next**.



Step 4. The RV215W checks for an Internet connection. After it finishes, click **Next**.

Router Setup Wizard

1. Welcome
 2. Check Connection
3. Configure Router
 4. Enable Security

Configure Router - Select Connection Type (Step 1 of 4)

Your internet connection type cannot be detected. Select the correct type from the options below. If you are not sure what the correct type is, call your Internet Service Provider.

Dynamic IP Address, or DHCP (Recommended)
 Static IP Address
 PPPoE
 PPTP (Europe Only)
 L2TP (Europe Only)

[Learn more about the different connection types](#)

Click **Next** to continue.

Back Next Cancel

Step 5. Click the **Static IP** radio button.

Step 6. Click **Next**.

Router Setup Wizard

1. Welcome
 2. Check Connection
3. Configure Router
 4. Enable Security

Configure Router - Settings for your Static Account (Step 2 of 4)

To set up your connection to the Internet, enter the following information.

Static IP Address	209	165	200	226
Subnet Mask	255	255	255	224
Gateway IP	209	165	200	225
DNS	209	165	200	227
Secondary DNS (optional)	209	165	200	228

These details are typically included in the welcome letter you received from your ISP. If you do not have this information, contact your ISP.

Click **Next** to continue.

Back Next Cancel

Step 7. In the Static IP Address field, enter the static IP address of the WAN interface.

Step 8. In the Subnet Mask field, enter the subnet mask for the static WAN interface address.

Step 9. In the Gateway IP field, enter the IP address of the gateway that the WAN interface

is to use to connect to the Internet.

Step 10. In the DNS field, enter the IP address of the primary Domain Name System (DNS) server. A DNS server maps domain names to IP addresses to be used by network devices.

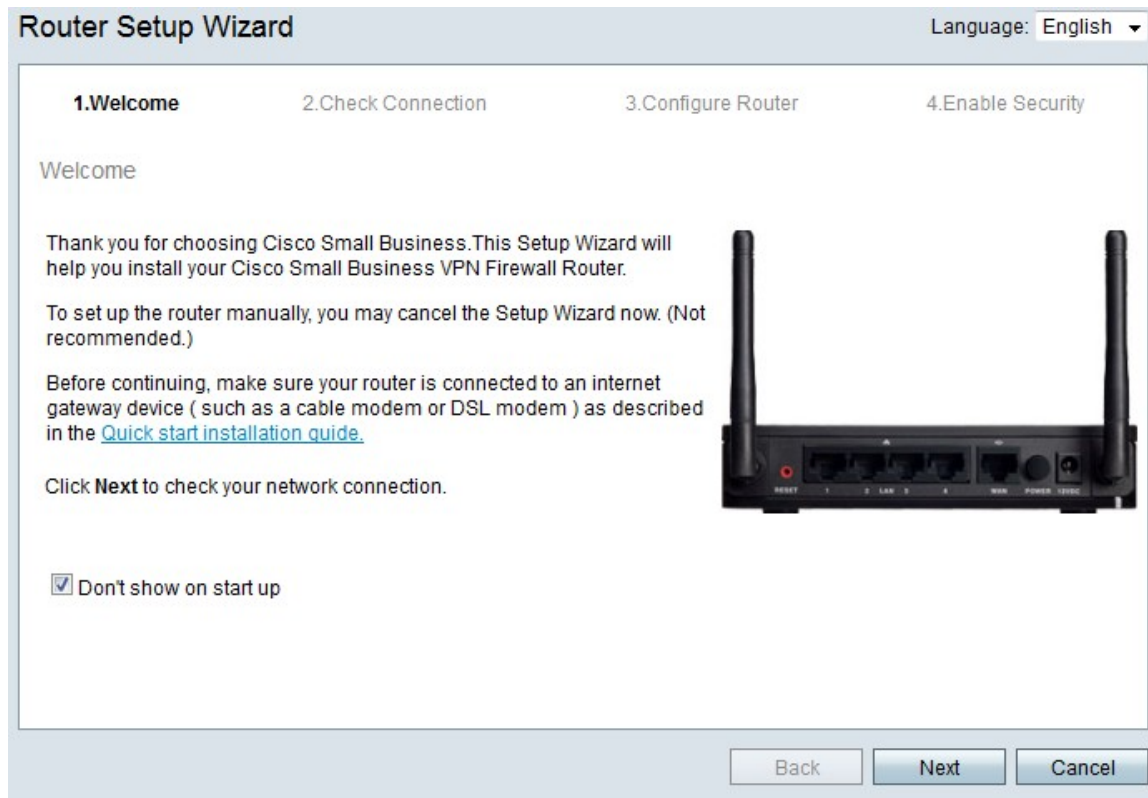
Step 11. (Optional) In the Secondary DNS (optional) field, enter the IP address of the secondary Domain Name System (DNS) server.

Step 12. Click **Next**.

Configure WAN with PPPoE

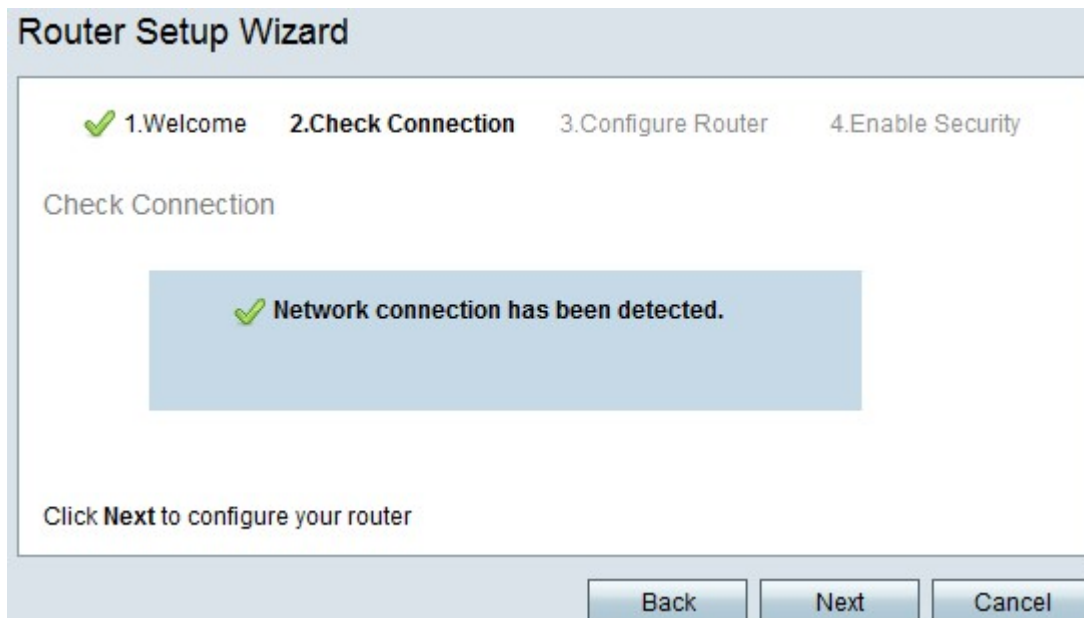
Point-to-Point Protocol over Ethernet (PPPoE) uses a simple username and password to access the Internet connection of the ISP. Perform this procedure if your ISP uses PPPoE for Internet connectivity. The procedure explains how to configure settings for PPPoE.

Step 1. Log in to the web configuration utility and choose **Administration > Setup Wizard**. The *Setup Wizard* page opens:

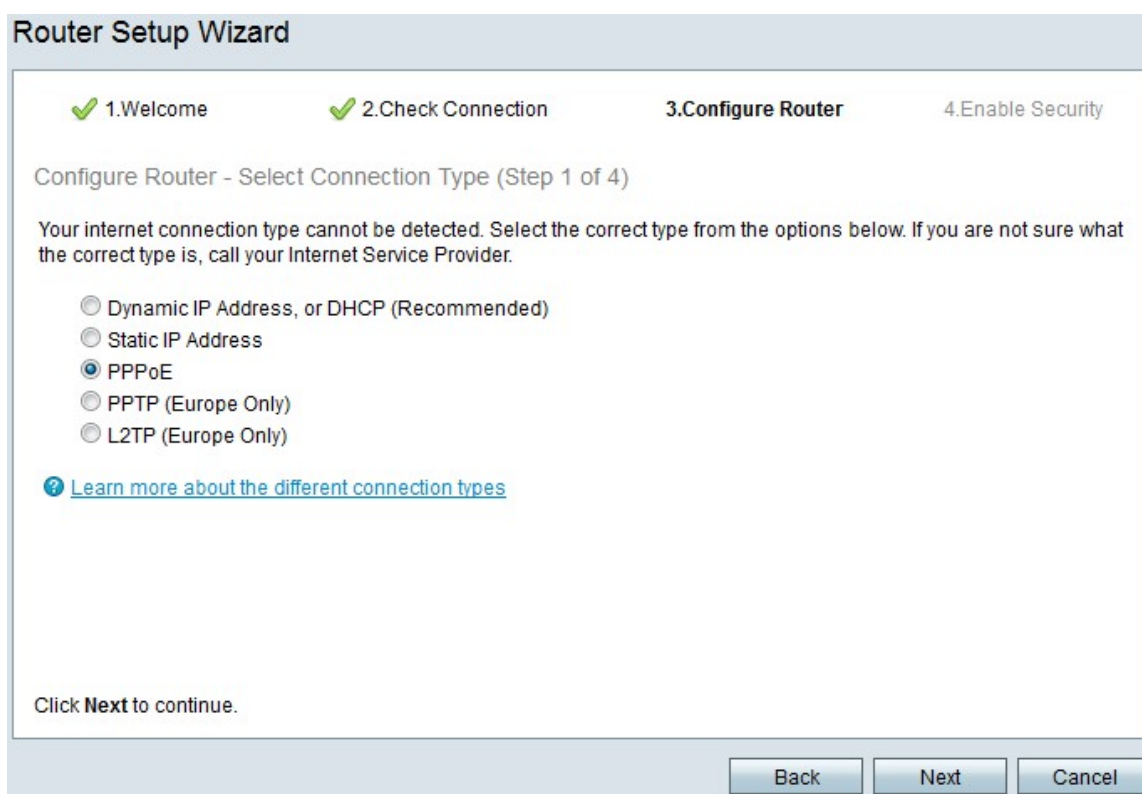


Step 2. Check the **Don't show on start up** check box to prevent the display of the Setup Wizard after login.

Step 3. Click **Next**.



Step 4. The RV215W checks for an Internet connection. After it finishes, click **Next**.



Step 5. Click the **PPPoE** radio button.

Step 6. Click **Next**.

Router Setup Wizard

✓ 1. Welcome ✓ 2. Check Connection **3. Configure Router** 4. Enable Security

Configure Router - Settings for your PPPoE Account (Step 2 of 4)

Enter the settings provided by your Internet Service Provider. Cisco Setup Wizard will configure the router with your account settings, so the router can automatically connect to the Internet for you. You will not longer need to manually enter your PPPoE details in order to connect.

Your account name is usually of the form name@ISPname.net.

Account Name user@exampleISP.net
Password ●●●●●●●●
Confirm Password ●●●●●●●●

Click **Next** to continue.

Back Next Cancel

Step 7. In the Account Name field, enter the account name registered with the ISP.

Step 8. In the Password field, enter the password for the PPPoE account.

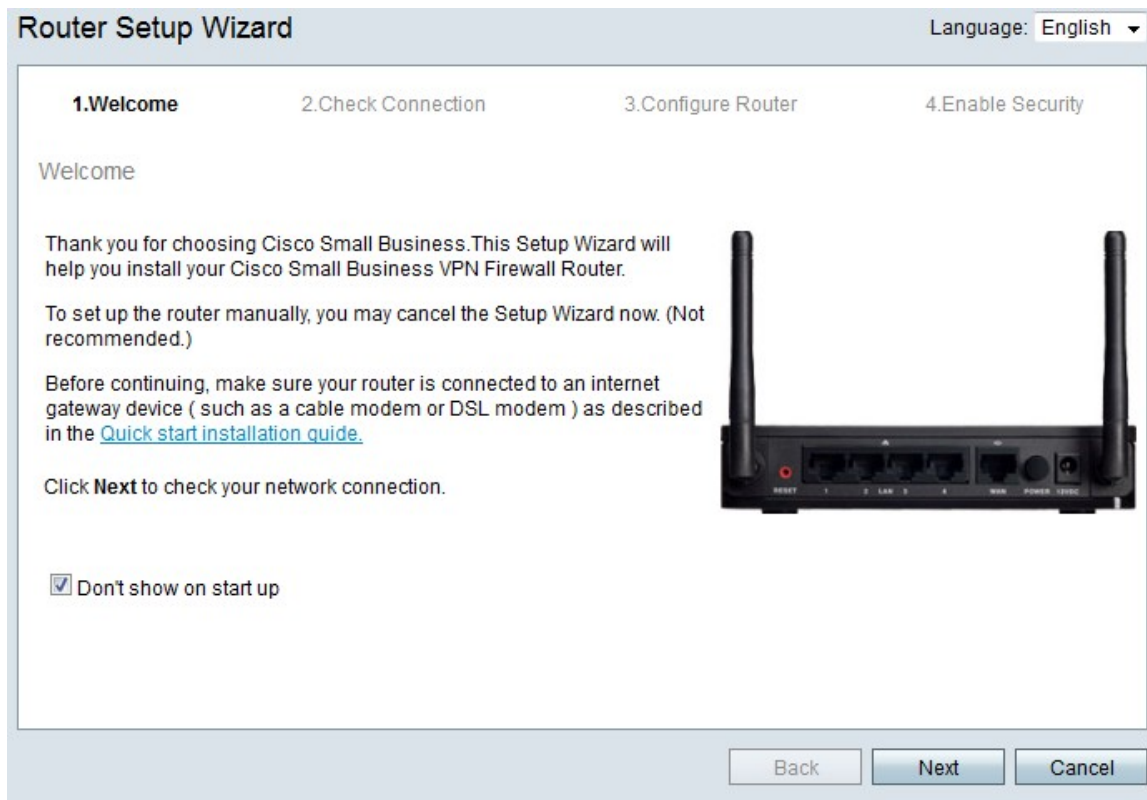
Step 9. In the Confirm Password field, retype the password.

Step 10. Click **Next**.

Configure WAN with PPTP

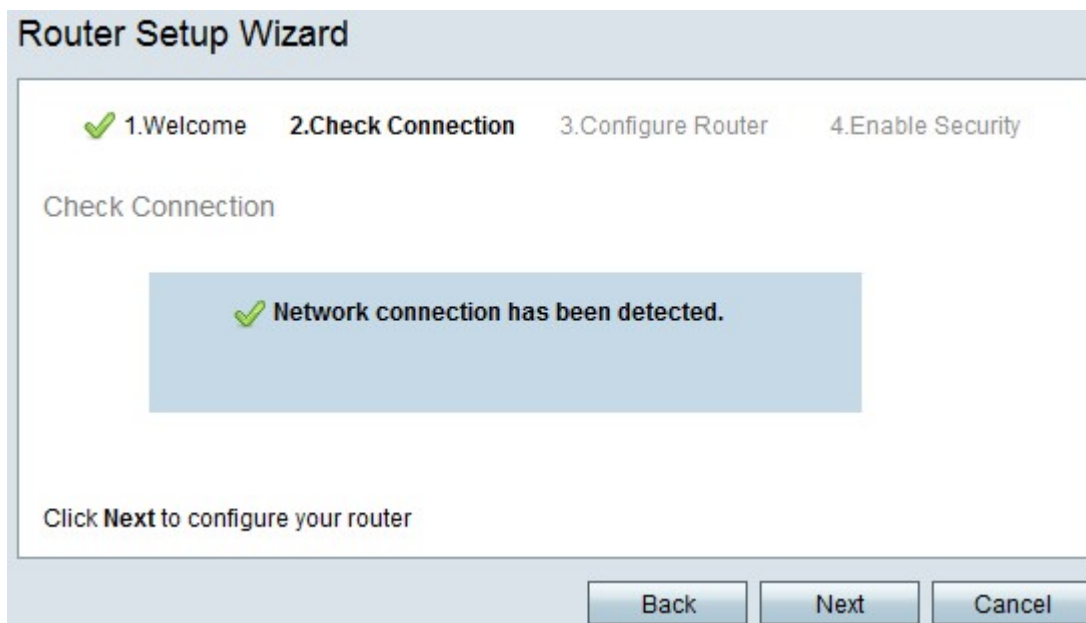
Point-to-Point Tunneling Protocol (PPTP) uses both a static IP address and an account with the ISP to connect to the Internet. Perform this procedure if your ISP uses a PPTP connection for Internet connectivity. This procedure explains how to configure settings for PPTP.

Step 1. Log in to the web configuration utility and choose **Administration > Setup Wizard**. The *Setup Wizard* page opens:



Step 2. Check the **Don't show on start up** check box to prevent the display of the Setup Wizard after login.

Step 3. Click **Next**.



Step 4. The RV215W checks for an Internet connection. After it finishes, click **Next**.

Router Setup Wizard

1. Welcome
 2. Check Connection
 3. Configure Router
 4. Enable Security

Configure Router - Select Connection Type (Step 1 of 4)

Your internet connection type cannot be detected. Select the correct type from the options below. If you are not sure what the correct type is, call your Internet Service Provider.

Dynamic IP Address, or DHCP (Recommended)
 Static IP Address
 PPPoE
 PPTP (Europe Only)
 L2TP (Europe Only)

[Learn more about the different connection types](#)

Click **Next** to continue.

Back Next Cancel

Step 5. Click the **PPTP (Europe Only)** radio button

Step 6. Click **Next**.

Router Setup Wizard

1. Welcome
 2. Check Connection
 3. Configure Router
 4. Enable Security

Configure Router - Settings for your PPTP Account (Step 2 of 4)

Enter the settings provided by your Internet Service Provider. Cisco Setup Wizard will configure the router with your account settings, so the router can automatically connect to the Internet for you. You will not longer need to manually enter your PPTP details in order to connect.

Your account name is usually of the form name@ISPname.net.

Account Name	<input type="text" value="user@exampleISP.net"/>	Static IP Address	<input type="text" value="209"/> <input type="text" value="165"/> <input type="text" value="200"/> <input type="text" value="226"/>
Password	<input type="password" value="....."/>	Subnet Mask	<input type="text" value="255"/> <input type="text" value="255"/> <input type="text" value="255"/> <input type="text" value="224"/>
Confirm Password	<input type="password" value="....."/>	Gateway IP	<input type="text" value="209"/> <input type="text" value="165"/> <input type="text" value="200"/> <input type="text" value="225"/>
		Server IP Address	<input type="text" value="209"/> <input type="text" value="165"/> <input type="text" value="200"/> <input type="text" value="227"/>

Click **Next** to continue.

Back Next Cancel

Step 7. In the Account Name field, enter the account name registered with the ISP.

Step 8. In the Password field, enter the password for the PPTP account.

Step 9. In the Confirm Password field, retype the password.

Step 10. In the Static IP Address field, enter the static IP address of the WAN interface.

Step 11. In the Subnet Mask field, enter the subnet mask for the static WAN interface address.

Step 12. In the Gateway IP field, enter the IP address of the gateway that the WAN interface is to use to connect to the Internet.

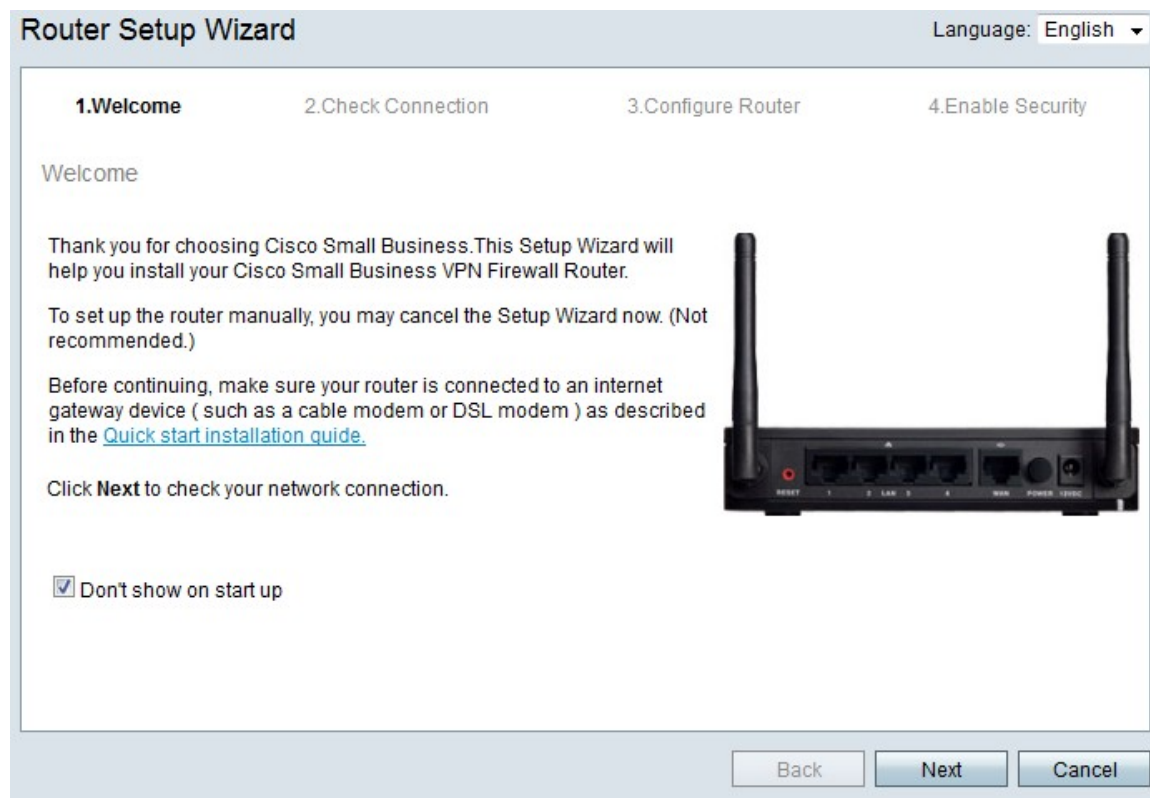
Step 13. In the Server field, enter the IP address of the Internet server for the ISP.

Step 14. Click **Next**.

Configure WAN with L2TP

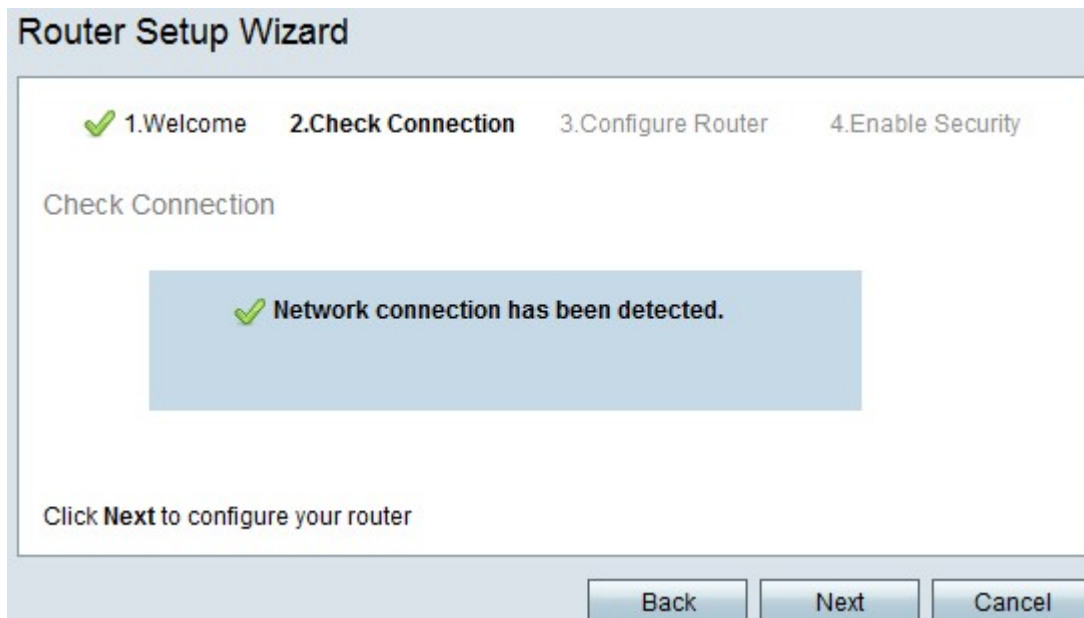
Layer 2 Tunneling Protocol (L2TP) also uses both a static IP address and an account with the ISP to connect to the Internet. Perform this procedure if your ISP uses an L2TP connection for Internet connectivity. This procedure explains how to configure settings for L2TP.

Step 1. Log in to the web configuration utility and choose **Administration > Setup Wizard**. The *Setup Wizard* page opens:

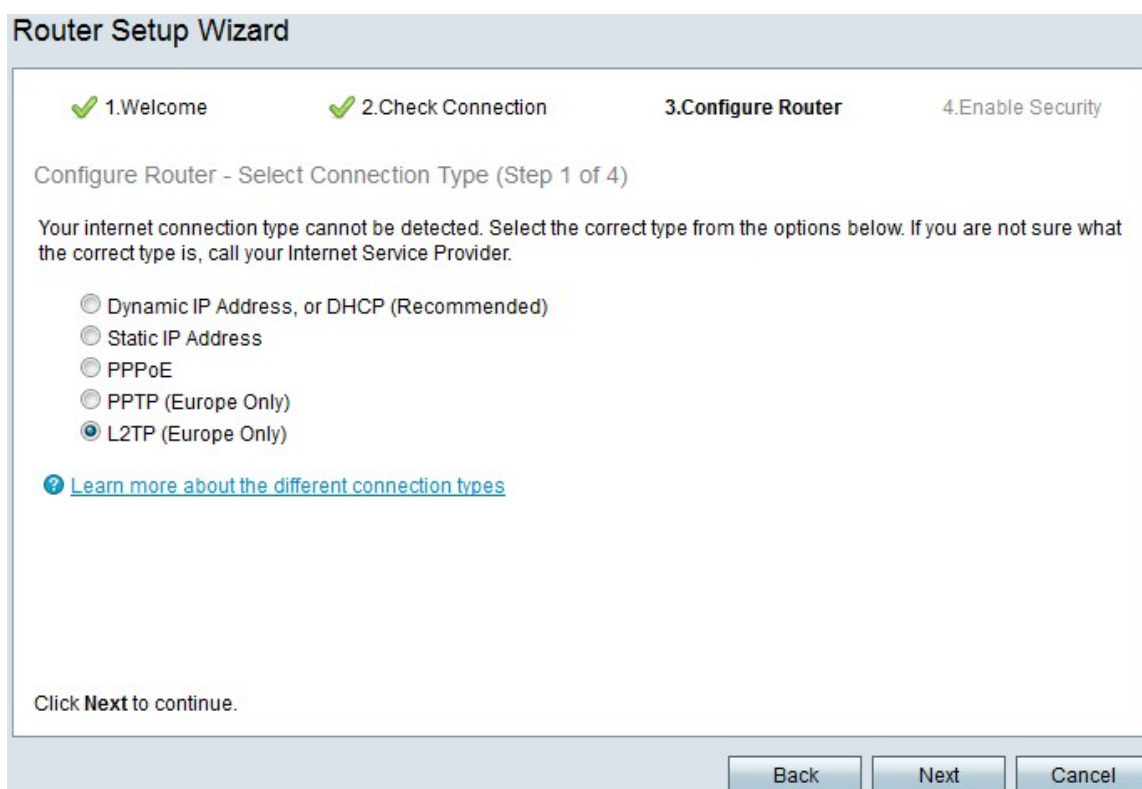


Step 2. Check the **Don't show on start up** check box to prevent the display of the Setup Wizard after login.

Step 3. Click **Next**.



Step 4. The RV215W checks for an Internet connection. After it finishes, click **Next**.



Step 5. Click the **L2TP (Europe Only)** radio button

Step 6. Click **Next**.

Router Setup Wizard

1. Welcome
 2. Check Connection
 3. **Configure Router**
 4. Enable Security

Configure Router - Settings for your L2TP Account (Step 2 of 4)

Enter the settings provided by your Internet Service Provider. Cisco Setup Wizard will configure the router with your account settings, so the router can automatically connect to the Internet for you. You will not longer need to manually enter your L2TP details in order to connect.

Your account name is usually of the form name@ISPname.net.

Account Name	<input type="text" value="user@exampleISP.net"/>	Static IP Address	<input type="text" value="209"/>	<input type="text" value="165"/>	<input type="text" value="200"/>	<input type="text" value="226"/>
Password	<input type="password" value="••••••••"/>	Subnet Mask	<input type="text" value="255"/>	<input type="text" value="255"/>	<input type="text" value="255"/>	<input type="text" value="224"/>
Confirm Password	<input type="password" value="••••••••"/>	Gateway IP	<input type="text" value="209"/>	<input type="text" value="165"/>	<input type="text" value="200"/>	<input type="text" value="225"/>
		Server IP Address	<input type="text" value="209"/>	<input type="text" value="165"/>	<input type="text" value="200"/>	<input type="text" value="227"/>

Click **Next** to continue.

Step 7. In the Account Name field, enter the account name registered with the ISP.

Step 8. In the Password field, enter the password for the L2TP account.

Step 9. In the Confirm Password field, retype the password.

Step 10. In the Static IP Address field, enter the static IP address of the WAN interface.

Step 11. In the Subnet Mask field, enter the subnet mask for the static WAN interface address.

Step 12. In the Gateway IP field, enter the IP address of the gateway that the WAN interface is to use to connect to the Internet.

Step 13. In the Server field, enter the IP address of the Internet server for the ISP.

Step 14. Click **Next**.

Final Settings

Perform this procedure after you have configure the WAN Internet connection type. This procedure explains how to configure the final settings for the Setup Wizard.

Router Setup Wizard

✔ 1. Welcome ✔ 2. Check Connection **3. Configure Router** 4. Enable Security

Configure Router - Set System Date and Time (Step 3 of 4)

Enter the router's time zone, date and time.

Time Zone: (GMT-08:00) Pacific Time (USA & Canada) ▼

Enable Network Time Protocol synchronization

Set the date and time manually, or click [here](#) to import them from your computer

Year: 2012 ▼ Month: 10 ▼ Day: 31 ▼

Time: 03 ▼ : 27 ▼ PM ▼

Click **Next** to continue.

Back Next Cancel

Step 1. From the Time Zone drop-down list, choose a time zone to apply to the RV215W.

Step 2. Perform one of the following actions:

- Enable Network Time Protocol synchronization — Click this radio button to use an Internet resource to set the date and time on the RV215W.
- Set the date and time manually — Click this radio button to manually set the date and time on the RV215W.
- click here to import them from your computer — Click the *here* link to automatically set the date and time to the date and time of the connected computer.

Step 3. (Optional) If you chose Set the date and time manually in Step 2, choose the date and time from the Year, Month, Day, and Time drop-down lists.

Step 4. Click **Next**.

Router Setup Wizard

✓ 1. Welcome ✓ 2. Check Connection **3. Configure Router** 4. Enable Security

Configure Router - Set Router MAC Address (Step 4 of 4)

Each device on your network has its own unique identifier called a MAC address. In most cases, you should choose 'Use Default Address.' If your ISP requires you to connect using a specific MAC address, you may change it here.

Choose a MAC Address to use.

Use Default Address (Recommended)
 Use This Computer's Address
 Use This Address:

Click **Submit** to configure your new Cisco router.

Step 5. Click a radio button according to the desired type of MAC address.

- **Use Default Address (Recommended)** — This option sets the default MAC address of the RV215W as the MAC address for the RV215W. This option should be used in most situations.
- **Use This Computer's Address** — This option sets the MAC address of the connected computer as the MAC address for the RV215W.
- **Use This Address** — This option allows you to enter a MAC address for the device to use. Use this option if your ISP requires the RV215W to have a specific MAC address

Router Setup Wizard

✓ 1>Welcome ✓ 2.Check Connection **3.Configure Router** 4.Enable Security

Configure Router - Set Router MAC Address (Step 4 of 4)

Each device on your network has its own unique identifier called a MAC address. In most cases, you should choose 'Use Default Address.' If your ISP requires you to connect using a specific MAC address, you may change it here.

Choose a MAC Address to use.

Use Default Address (Recommended)

Use This Computer's Address

Use This Address:

Click **Submit** to configure your new Cisco router.

Step 6. (Optional) If you chose Use This Address in Step 5, enter the MAC address in the adjacent text-entry field to Use This Address.

Step 7. Click **Submit**.

Router Setup Wizard

✓ 1>Welcome ✓ 2.Check Connection **3.Configure Router** 4.Enable Security

Configure Router - Update Router Settings

✓ Successfully configured router
✓ Internet connection detected

The Cisco Setup Wizard has detected your Internet connection.

Click **Next** to configure your network security.

Step 8. Click **Next**.

Router Setup Wizard

✓ 1>Welcome ✓ 2.Check Connection ✓ 3.Configure Router **4.Enable Security**

Enable Security - Set Router Password (Step 1 of 4)

The administrative router password protects your router from unauthorized access. For security reasons, you should change the router password from its default setting. Please write this password down for future reference.

Enter a new router password: (Needs 8 characters composed of lower and upper case letters as well as numbers)

Router Password

Confirm Password

[Learn more about passwords](#)

Disable Password Strength Enforcement

Click **Next** to continue.

Back Next Cancel

Step 9. In the Router Password, enter the password for the administrative account.

Step 10. In the Confirm Password, re-enter the password for the administrative account.

Step 11. (Optional) Check the **Disable Password Strength Enforcement** check box to disable password strength requirements. This option makes your network less secure.

Step 12. Click **Next**.

Router Setup Wizard

✓ 1>Welcome ✓ 2.Check Connection ✓ 3.Configure Router **4.Enable Security**

Enable Security - Name Your Wireless Network (Step 2 of 4)

The name, or SSID, your wireless network identifies your network so that wireless devices can find it.

Enter a name for your wireless network:

Network Name

For example: MyNetwork

[Learn more about network names](#)

Click **Next** to continue.

Back Next Cancel

Step 13. In the Network Name field, enter a name with which the network to be identified.

Step 14. Click **Next**.

The screenshot shows the 'Router Setup Wizard' window. At the top, there are four progress indicators: '1. Welcome', '2. Check Connection', '3. Configure Router', and '4. Enable Security'. The '4. Enable Security' step is currently active. Below the progress indicators, the title is 'Enable Security - Secure Your Wireless Network (Step 3 of 4)'. The main instruction is 'Select the type of network security.' There are three radio button options: 'Best Security (WPA2 Personal - AES)' (selected), 'Better Security (WPA Personal - TKIP/AES)', and 'No Security (Not Recommended)'. Each option has a brief description. Below the options, there is a text input field for a security key, containing the example 'OUREMjI2RDYwRTcwREY5MjY3Qj'. To the right of the input field is a strength indicator bar with four colored segments (red, yellow, green, grey) and the word 'Strong'. Below the input field is a blue link: '? Learn more about your network security options'. At the bottom left, it says 'Click **Next** to continue.' At the bottom right, there are three buttons: 'Back', 'Next', and 'Cancel'.

Step 15. Click a radio button according to the desired type of network security.

- **Best Security (WPA2 Personal - AES)** — This option is the most secure for wireless networks but does not work with all devices especially older devices.
- **Better Security (WPA Personal - TKIP/AES)** — This option is not as secure as WPA2 Personal - AES but works with most devices.
- **No Security (Not Recommended)** — This option uses no security for the wireless network and leaves network vulnerable. This option is not recommended.

Router Setup Wizard

✓ 1>Welcome ✓ 2.Check Connection ✓ 3.Configure Router **4.Enable Security**

Enable Security - Secure Your Wireless Network (Step 3 of 4)

Select the type of network security.

- Best Security (WPA2 Personal - AES)
Recommended for new wireless computers and devices. Older wireless devices may not support this option.
- Better Security (WPA Personal - TKIP/AES)
Recommended for older wireless computers and devices that may not support WPA2.
- No Security (Not Recommended)

Enter a security key with 8-63 characters or 64 hexadecimal digits, or use the randomly-generated security key below.

Strong

[Learn more about your network security options](#)

Click **Next** to continue.

Step 16. In the text-entry field, enter a 8 to 63 characters or 64 hexadecimal digits for the security key, or use the automatically generated security key provided in the field.

Step 17. Click **Next**.

Router Setup Wizard

✓ 1>Welcome ✓ 2.Check Connection ✓ 3.Configure Router **4.Enable Security**

Enable Security - Confirm security Settings (Step 4 of 4)

Please review the followings settings and ensure the data is correct.

Network Name (SSID): MyBusinessNetwork
Network Security Type: Best Security (WPA2 Personal - AES)
Security Key: OUREMjI2RDYwRTcwREY5MjY3Qj

Click **Submit** to enable security on your new Cisco router.

Step 18. Click **Submit**. The Setup Wizard finalizes your settings.

Router Setup Wizard

✓ 1. Welcome

✓ 2. Check Connection

✓ 3. Configure Router

✓ 4. Enable Security

Router Setup Complete

✓ Congratulations, your router has been set up successfully. We strongly recommend that you save these settings on your desktop or print them out. You need this information later if you want to add other wireless computers or devices to your network.

Network Name (SSID): MyBusinessNetwork

Network Security Type: Best Security (WPA2 Personal - AES)

Security Key: OUREMjI2RDYwRTcwREY5MjY3Qj



 [Save security settings](#)  [Print security settings](#)

Click **Finish** to close this wizard.

Back

Finish

Cancel

Step 19. Click **Finish**.